

Palm OTDR Overtek OT-S16C/N

Most Compact High-Performance OTDR

Ideal for LAN/WAN/FTTx certification & trouble-shooting
FTTx in-service testing/ Testing through $\geq 1 \times 64$ splitter:

Model S20C/X & S16C/N (1625nm with filter)

Splitter & fiber-end identifiable

Perfect user interface, handheld & lightweight (1kg)

Overall fiber applications:

SM: 1310/1490/1550/1625nm (with filter), up to 45dB

MM: 850/1300nm, 18/22dB

Quick start: <5 seconds

Hotkeys: Easiest operation in the world, push-and-test

High precision measurement

1000 test records storage

USB/RS-232 data interface

Bellcore file format (.sor)

PC software for traces batch editing & flexible printing

Multiple languages: EN/DE/IT/FR/ES/PT/RU/KR/VN/CN...

8 hrs continuous operation/20 hrs standby

Dust-shock proof (2m drop test)

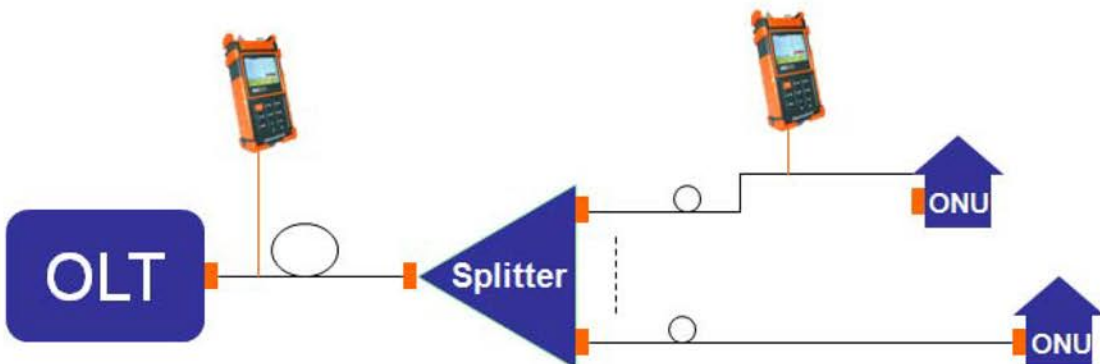
Visible Fault Locator for macro bend detection and fiber identification

Optional Stabilized Laser Source and SM/MM Power Meter

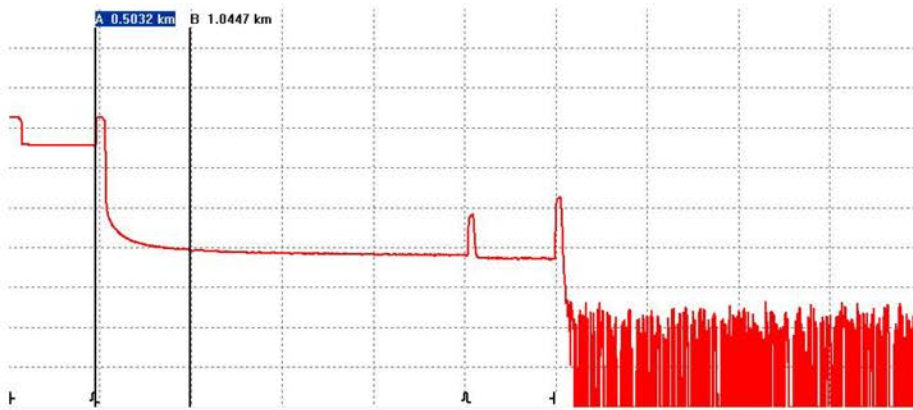
CE, FCC, FDA certificates



palmOTDR series handheld OTDR supports averaging and real-time tests featuring compact design, excellent stability, user-friendliness and cost-effectiveness. The hotkeys enable convenient events review and analysis. A variety of models are available for singlemode/multimode fibers and LAN/WAN/FTTx applications. With TraceManager software, you can save and transfer test data from OTDR to PC for further analysis, reporting and printing.



- In-service testing (1625nm with filter)



- Testing through $\geq 1 \times 64$ splitter, splitter and fiber end identifiable

Live Optical Signal Check

When OTDR tests with 1310/1490/1550nm wavelength, the live signals transmitting in the tested fiber may not only affect OTDR measurements but also damage the equipments connected to the network (SDH/WDM/PON) and OTDR receiver. palmOTDR series avoids the problem by starting in-service communication check before testing with message warning and auto termination functions to effectively protect test instruments and communications equipments.

1. Connect fiber to optical port
2. Press 'Run/Stop' to start
3. Traffic Signal Detected !
Quit

Avoid Eyes Exposed to Laser!

--Km/Div	--dB/Div	Para-1
Ave.Time: --s	Samp.Dist.: --	
Range: --km	PulseWidth: ---	
IOR : -.----	Wavelength: ----nm	

Optional Stabilized Laser Source

Stabilized Laser Source shares palmOTDR optical port and work on the same working wavelength of palmOTDR.

Optional Optical Power Meter

- No warm-up
- Absolute power value and power loss measurement
- High accuracy, zero shift
- Power monitoring, high-low limit setting
- Reference setting

OTDR TraceManager Software

TraceManager software can display, analyze and edit trace files, generate and print comprehensive test and analysis reports in various forms.

- Trace viewing, events analysis
- Multi traces comparison
- Batch editing and flexible printing
- Bidirectional testing (Optional)
- CSV/ASCII report formats



Specifications

Model ⁽¹⁾	Wavelength (±20nm)	Dynamic Range ⁽²⁾	Event DeadZone(m) ⁽⁵⁾	Attenuation DeadZone(m) ⁽⁵⁾
palmOTDR- M20A/N	850/1300	18/22dB	4	12
palmOTDR- S20A/N	1310/1550	24/24dB	4	12
palmOTDR- S20B/N	1310/1550	32/32dB	2.5	12
palmOTDR- S20C/N	1310/1550	38/37dB	2.5	12
palmOTDR- S20D/N	1310/1550	45/43dB	2.5	12
palmOTDR- S16C/N	1625	37dB	1.5	10
palmOTDR- S20C/P	1310/1490/1550	38/37/37dB	2.5	12
palmOTDR- S20C/X	1310/1550/1625	38/37/37dB	1.5	10
Selectable Range (Km) ⁽³⁾	0.1,0.3,0.5,1.3,2.5,5,10@850nm; 0.1,0.3,0.5,1.3,2.5,5,10,20,40,80@1300nm; 0.3,1.3,2.5,5,10,20,40,80,120,160,240@others			
Pulse Width ⁽⁴⁾	12ns,30ns,100ns,275ns,1µs@850nm; 12ns,30ns,100ns,275ns,1µs,2.5µs@1300nm; 5ns,10ns,12ns,30ns,100ns,275ns,300ns,1µs,2.5µs,10µs,20µs@others			
Averaging Time	15s, 30s, 1min, 2min, 3min			
Distance Measure Accuracy	±(1m + 5×10 ⁻⁵ ×distance + sampling space)			
Attenuation Detect Accuracy	±0.05 dB/ dB			
Reflection Detect Accuracy	±4 dB			
Data Storage	1000 records			
Connectivity	USB/RS-232			
Connector	FC (Interchangeable SC, ST), UPC/APC			
Power Supply	NiMH Battery / AC Adapter			
Battery Life	8 hrs continuous operation, 20 hrs standby (on one charge); recharging time < 4 hrs			
Operating Temperature	0 ~ 50			
Storage Temperature	-20 ~ 70			
Relative Humidity	0~95% (non-condensing)			
Weight	1kg (2.2 lbs)			
Dimensions (H×W×T)	220×110×70mm (8.7×4.3×2.7 inch)			
Visible Fault Locator (Standard on Type B/N, C/N & D/N; Optional on Type A/N, C/P & C/X)				
Output Power (dBm)	≥-3			
Max Measurement Range	5 Km			

Stabilized Laser Source (Optional on Type B, C and D)	
Wavelength	Same as OTDR working wavelength ⁽⁶⁾
Output Power (dBm)	≥-7
Optical Power Meter (Optional on all Type)	
Calibrated Wavelength (nm)	850,1300,1310,1490,1550,1625
Power Range (dBm) ⁽⁷⁾	-70 ~ +10
Detector Type	InGaAs
Display Resolution	0.01dB
Accuracy	± 5% ± 0.01nW(±0.5dB@850nm)
MOD Identification	1K, 2K Hz

Notes:

- (1) Specifications describe the instrument's warranted performance, measured with typical PC-type connectors. Uncertainties due to the refractive index of fiber are not considered;
- (2) The dynamic range is measured at maximum pulse width within averaging time of 3 minutes;
- (3) Among the selectable ranges 160km and 240km are only for type B, C & D; 120Km is only for type A;
- (4) Among the pulse widths 5ns, 10ns, 300ns, 10µs and 20µs are only available for type B, C & D; 12ns and 275ns are only for type A;
- (5) Conditions for dead zone measurement: Reflection event is at 0.6Km, reflection intensity is less than -45dB, event dead zone is measured with pulse width of 10ns (Model A with 12ns); attenuation dead zone is measured with pulse width of 30ns.
- (6) Stabilized Laser Source shares palmOTDR optical port and work on the same working wavelength of palmOTDR.
- (7) The lower limit of measurement range at 850nm is -60 dBm.

* Specifications subject to change without notice

Ordering Information

Standard Package Includes:

Instrument, FC/PC connector, NiMH battery, TraceManager software CD, Data cable (USB/RS-232), AC adaptor, Soft carrying case, Warranty card, CE certificate, Certificate of calibration, Quick reference guide.

Optional Parts

Part Description	Part Number (P/N)	Part Description	Part Number (P/N)
50M Optical patch cord	AC-FJC-50-FC/FC	ST OTDR Connector	AC-CONN-ST-L2
SC OTDR Connector	AC-CONN-SC-L2	Deluxe Tool Box	AC-PB-40